

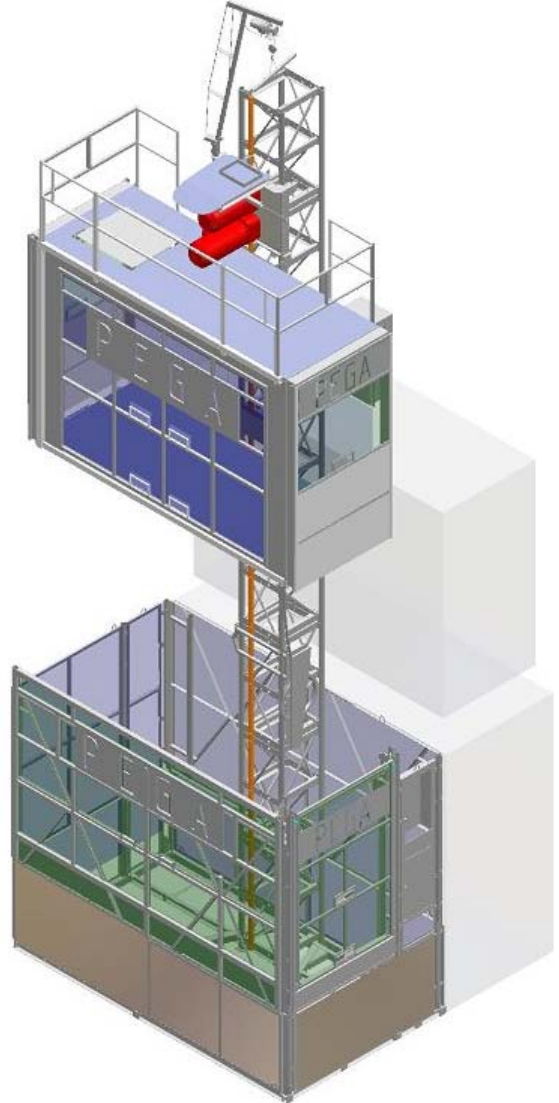
HOIST / PEOPLE & MATERIAL

3232

PEGA

Boasting a 3.2t capacity and a 3.2m long car, the Pega 3232 is a mid-speed workhorse great for mid to large sized projects. We specifically purchased these hoists for the The Carlsen in Victoria. They were subsequently used on the Aveo Gasworks development in Teneriffe in Brisbane, before being redeployed to Bela by Mosaic at Mermaid Beach.

SPECIFICATIONS	
Max capacity	3.2 t
Car length	3.2 m
Max speed	90 m/min



CAPACITY	
Payload capacity	3200 kg
Erection load	1000 kg
Speed	0 – 90 m/min
Maximum lifting height (single car)	200 metres
Cars	1
CAR DIMENSIONS	
Width	1.5 m
Length	3.2 m
Height	2.49 m
Door opening (w x h)	1.43 m x 2.0 m

ELECTRICAL DATA	
Power supply	440 V / 50 Hz / 3 phase
Power supply fuses	160 A
Starting current	160 A
Power consumption	90 kVa
WEIGHTS	
Cage (incl. drive system)	7200 kg
Mast Section (2 racks)	200 kg
MAST SECTION DIMENSIONS	
Centre to centre	650 mm x 650 mm
Length	1508 mm