

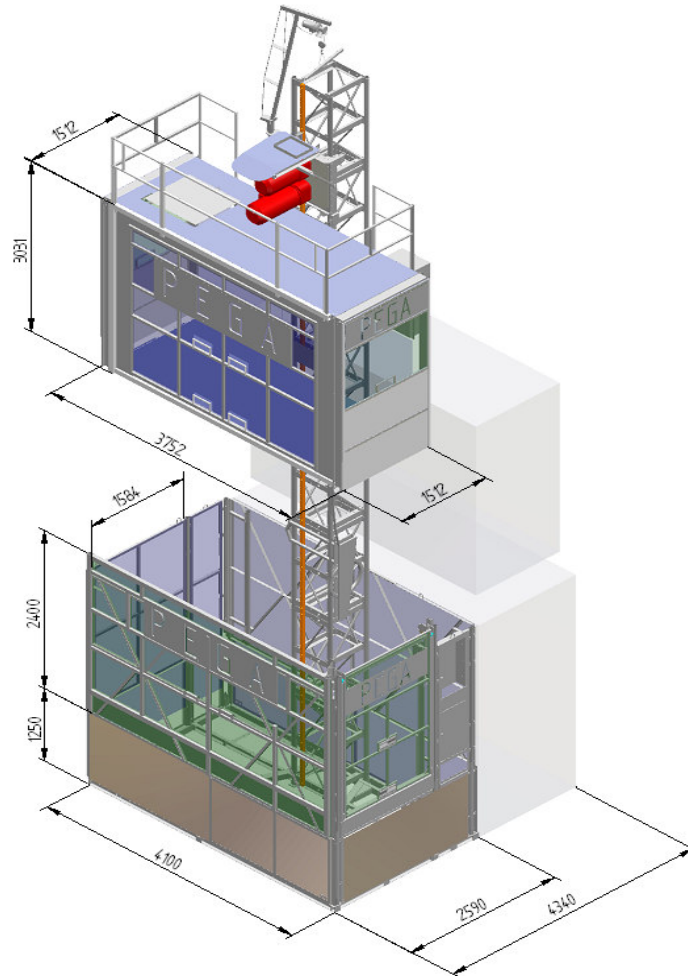
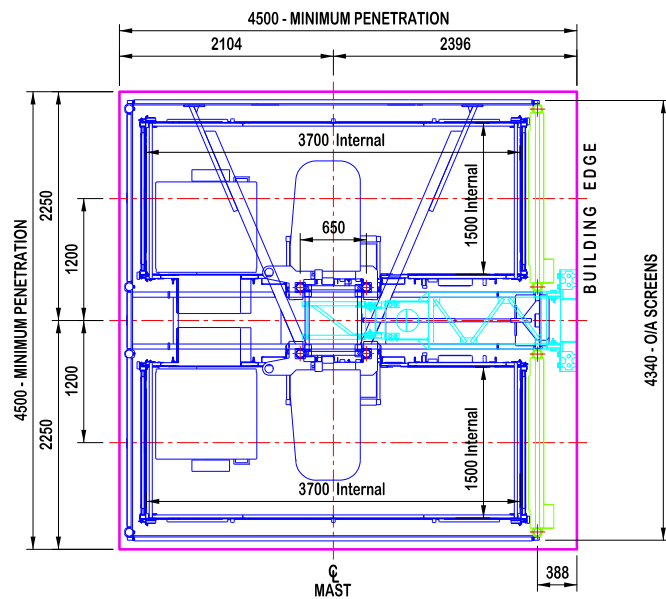
HOIST / PEOPLE & MATERIAL

2837

PEGA

We have 14 of these high speed Pega hoists which are a staple for our tallest high rise projects. With 2.8t capacity and a 3.7m long car, these lifts travel at 100m per minute, and are well placed to provide the efficiency required on demanding sites. Two of these hoists were used for the Brisbane Skytower project and four were deployed on Ivy & Eve at South Brisbane.

| SPECIFICATIONS | |
|----------------|-----------|
| Max capacity | 2.8 t |
| Car length | 3.7 m |
| Max speed | 100 m/min |



| CAPACITY | |
|-------------------------------------|---------------|
| Payload capacity | 2800 kg |
| Erection load | 1000 kg |
| Speed | 0 – 100 m/min |
| Maximum lifting height (single car) | 200 metres |
| Maximum lifting height (two car) | 200 metres |
| CAR DIMENSIONS | |
| Width | 1.5 m |
| Length | 3.7 m |
| Height | 2.49 m |
| Door opening (w x h) | 1.5 m x 2.0 m |

| ELECTRICAL DATA | |
|---------------------------|-------------------------------|
| Power supply | 415 – 460 V / 50 Hz / 3 phase |
| Power supply fuses | 160 A / car |
| Starting current | 110 A |
| Power consumption | 110 kVa |
| WEIGHTS | |
| Cage (incl. drive system) | 2900 kg / car |
| Mast Section (2 racks) | 175 kg |
| MAST SECTION DIMENSIONS | |
| Centre to centre | 650 mm x 650 mm |
| Length | 1508 mm |