

CRANE / MOBILE

FRANNA AT-18

TEREX

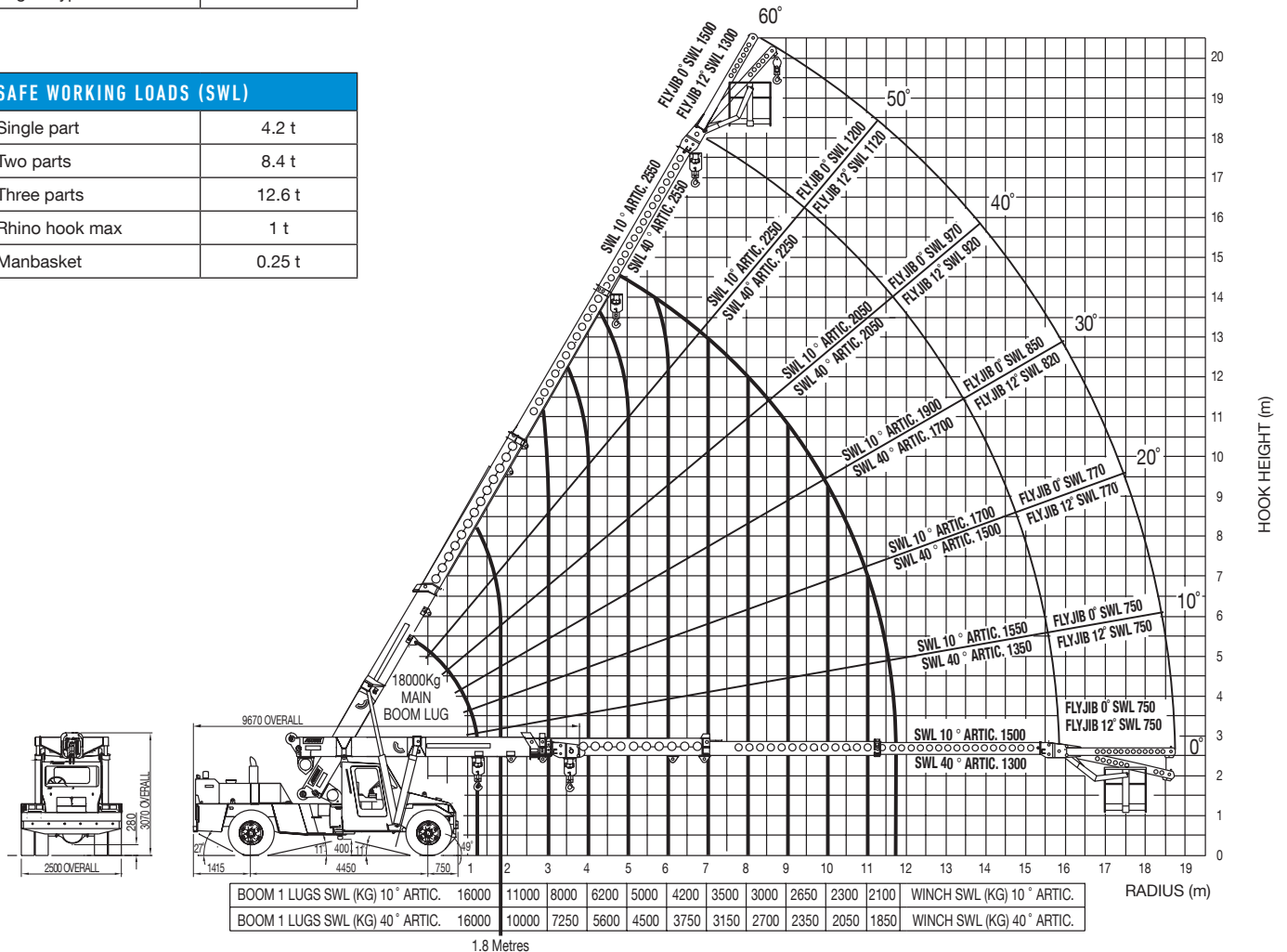
The Australian made Franna crane is ideally suited to our environment and offers multi-purpose capability. Frannas can pick-and-carry a load, placing it wherever required. They are regularly used to assist with the positioning of precast concrete panels, tailing them up to help the tower crane lift them off the delivery truck and into place. Frannas are also used in the erection and dismantle of tower cranes.

SPECIFICATIONS

| | |
|----------------|--------|
| Max jib length | 20 m |
| Max radius | 18.5 m |
| Engine type | Diesel |

SAFE WORKING LOADS (SWL)

| | |
|----------------|--------|
| Single part | 4.2 t |
| Two parts | 8.4 t |
| Three parts | 12.6 t |
| Rhino hook max | 1 t |
| Manbasket | 0.25 t |



CRANE / MOBILE

FRANNA AT-25

TEREX

The Australian made Franna crane is ideally suited to our environment and offers multi-purpose capability. Frannas can pick-and-carry a load, placing it wherever required. They are regularly used to assist with the positioning of precast concrete panels, tailing them up to help the tower crane lift them off the delivery truck and into place. Frannas are also used in the erection and dismantle of tower cranes.

SPECIFICATIONS

| | |
|----------------|---------|
| Max jib length | 18 m |
| Max radius | 15.71 m |
| Engine type | Diesel |

SAFE WORKING LOADS (SWL)

| | |
|-------------|-------|
| Single part | 4.2 t |
| Six parts | 25 t |

